



## SECTION 09: BENCH OUTLET BOXES & PERIMETER TRUNKING

### Skirting Trunking

Unitrunk Skirting Trunking is easily fitted and is available in 3m lengths with all the necessary bends, etc. to form a complete installation. Trunking is designed for installation after wall and floor surfaces have been completed. Tee Pieces, Pier Sets, etc. can be supplied to customer requirements.



### Dado Trunking

Unitrunk Dado trunking is available in 3m lengths with all the necessary bends etc. to form a complete installation.



### Bench Trunking

Unitrunk Bench Trunking is manufactured with a galvanised sheet steel body to BS EN 10346:2015 in 3m lengths as standard. Alternative lengths can be supplied to order to suit any application. Each length is provided with coupling and screws. The cover can be supplied punched to accept socket outlets or other accessories.



ACCREDITED TO THE FOLLOWING STANDARDS:



## Unitrunk Skirting Trunking

Easily fitted and available with all the necessary bends, etc. to form a complete installation. Types S1 and S2 are designed for installation after wall and floor surfaces have been completed. Tee pieces, Threshold Units, Pier Sets, etc. can be supplied to customer requirements.

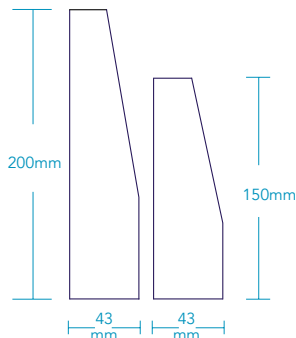
The body and divider of the standard skirting trunking are manufactured from galvanised sheet steel to BS EN 10346:2015.

The cover is made from galvanised sheet steel and can be finished in epoxy/polyester coating of any colour on request. All trunking is supplied in 3m lengths as standard, complete with joining plates and screws.

S1 and S2 trunking is supplied with compartments as shown and is therefore suitable for carrying mains, telephone and VDU or other low voltage circuits. The dividers have provision every 200mm along the length, with 20mm EKO's to allow access between compartments. A Back Box is also available on request for complete segregation.

It is normal practice to run the mains circuit in the larger compartment as the cover can be punched to accept a standard 13 amp socket or other accessory. Alternatively a short section of cover can be supplied with one or two gang socket outlet. Socket plates and accessories are manufactured to overlap at the edges.

### Standard Skirting Trunking



Part Code	Description
S1/2	2 compartment (150mm x 43mm)
S1/3	3 compartment (150mm x 43mm)
S2/2	2 compartment (200mm x 43mm)
S2/3	3 compartment (200mm x 43mm)

Other sizes available on request.

### Skirting Blank End

Part Code	Description
S1BELH	Left Hand
S1BERH	Right Hand
S2BELH	Left Hand
S2BERH	Right Hand



Left Hand



Right Hand

## BENCH OUTLET BOXES & PERIMETER TRUNKING

### Skirting Outside Bend



Part Code	Description
S1OB2	2 compartment (150mm x 43mm)
S1OB3	3 compartment (150mm x 43mm)
S2OB2	2 compartment (200mm x 43mm)
S2OB3	3 compartment (200mm x 43mm)

### Skirting Inside Bend



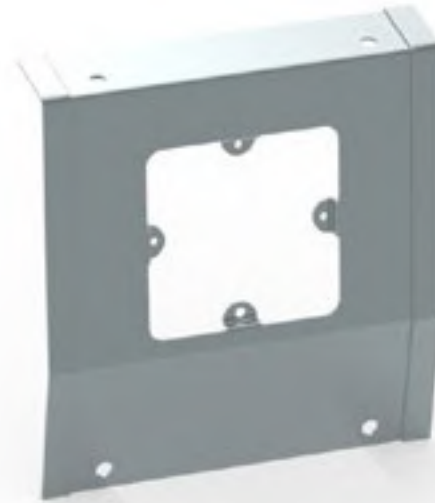
Part Code	Description
S1IB2	2 compartment (150mm x 43mm)
S1IB3	3 compartment (150mm x 43mm)
S2IB2	2 compartment (200mm x 43mm)
S2IB3	3 compartment (200mm x 43mm)

### Skirting Tee



Part Code	Description
S1T2	2 compartment (150mm x 43mm)
S1T3	3 compartment (150mm x 43mm)
S2T2	2 compartment (200mm x 43mm)
S2T3	3 compartment (200mm x 43mm)

Skirting Socket Plate



Part Code	Description
S1S1	Single Socket (150mm x 43mm)
S1S2	Double Socket (150mm x 43mm)
S2S1	Single Socket (200mm x 43mm)
S2S2	Double Socket (200mm x 43mm)

Skirting Back Boxes



Part Code	Description
S1S1BBX2	Single Socket - 2 Comp. (150mm x 43mm)
S2S1BBX2	Single Socket - 2 Comp. (200mm x 43mm)



Part Code	Description
S1S1BBX3	Single Socket - 3 Comp. (150mm x 43mm)
S2S1BBX3	Single Socket - 3 Comp. (200mm x 43mm)



Part Code	Description
S1S2BBX2	Double Socket - 2 Comp. (150mm x 43mm)
S2S2BBX2	Double Socket - 2 Comp. (200mm x 43mm)



Part Code	Description
S1S2BBX3	Double Socket - 3 Comp. (150mm x 43mm)
S2S2BBX3	Double Socket - 3 Comp. (200mm x 43mm)

QuickFix Trunking

QuickFix Multi Compartment Trunking

Lighting Trunking

Uniklip Cable Tray

Speedway Cable Ladder Pre-Galv. Cable Ladder

Cable Basket Systems

Channel & Support

Floor Trunking

Bench Outlet & Perimeter Trunking

Steel Conduit (Class 4)

Innovative Design Solutions

Accessories & Supports

Index

# BENCH OUTLET BOXES & PERIMETER TRUNKING

## Unitrunk Dado Trunking

Available with all the necessary bends, etc., to form a complete installation. The body and divider of the DAD-TK are manufactured from galvanised sheet steel to BS EN 10346:2015. The dividers are provided with 20mm E knockouts for easy access to all compartments at 200mm centres. A Back Box is also available on request for complete segregation. All trunking is supplied in 3m lengths as standard, complete with joining plates and screws.

The cover is made from galvanised sheet steel and can be finished in epoxy polyester coating of any colour on request. The trunking is suitable for carrying mains, telephone and VDU or other low voltage circuits.

It is normal practice to run the mains circuit in the larger compartment as the cover can be punched to accept a standard 13 amp socket or other accessory.

Alternatively a short section of cover can be supplied with a one or two gang socket outlet. Socket plates and accessories are manufactured to overlap at the edges of the trunking cover.

### Dado Trunking



Part Code	Description
DADTK62	Single compartment (152mm x 51mm)
DADTK62x3	3 compartment (152mm x 51mm)
DADTK82	Single compartment (202mm x 51mm)
DADTK82x3	3 compartment (202mm x 51mm)


Other sizes available on request.

### Dado Blank End



Part Code	Description
DADBE62	152mm x 51mm
DADBE82	202mm x 51mm

### Dado Tee



Part Code	Description
DADT62	Single compartment
DADT62x3	3 compartment
DADT82	Single compartment
DADT82x3	3 compartment

Dado Outside Bend

Part Code	Description
DADOB62	Single compartment (152mm x 51mm)
DADOB62x3	3 compartment (152mm x 51mm)
DADOB82	Single compartment (202mm x 51mm)
DADOB82x3	3 compartment (202mm x 51mm)



Dado Inside Bend

Part Code	Description
DADIB62	Single compartment (152mm x 51mm)
DADIB62x3	3 compartment (152mm x 51mm)
DADIB82	Single compartment (202mm x 51mm)
DADIB82x3	3 compartment (202mm x 51mm)



Dado Flat Bend

Part Code	Description
DADFB62	Single compartment (152mm x 51mm)
DADFB62x3	3 compartment (152mm x 51mm)
DADFB82	Single compartment (202mm x 51mm)
DADFB82x3	3 compartment (202mm x 51mm)



Dado Socket Plate

Part Code	Description
DAS1	Single socket (152mm x 51mm)
DAS1/82	Single socket (202mm x 51mm)
DAS2	Twin socket (152mm x 51mm)
DAS2/82	Twin socket (202mm x 51mm)



Full range of Dado Socket Plates is available. Image shown as example only.

Dado Back Boxes

Part Code	Description
DAS2BB	Double back box - Twin socket
DAS1BB	Single back box - Single socket



Full range of Dado Back Boxes is available. Image shown as example only.

QuickFix Trunking

QuickFix Multi Compartment Trunking

Lighting Trunking

Uniklip Cable Tray

Speedway Cable Ladder Pre-Galv. Cable Ladder

Cable Basket Systems

Channel & Support

Floor Trunking

Bench Outlet & Perimeter Trunking

Steel Conduit (Class 4)

Innovative Design Solutions

Accessories & Supports

Index

# BENCH OUTLET BOXES & PERIMETER TRUNKING

## Bench Trunking

Manufactured with a galvanised sheet steel body and lid to BS EN 10142 in 3m lengths as standard. Alternative lengths can be supplied to order to suit any application. Each length is provided with coupling and screws. The cover can be supplied punched to accept socket outlets or other accessories. If required, a dividing fillet (25mm high) can be supplied in position. The trunking cover can also be supplied with epoxy/polyester finish in any colour to order.

### Bench Trunking



Part Code	Description
BTTK	90mm x 90mm

Other sizes available on request.

### Bench Blank End



Part Code
BTBE

### Single Outlet Plate



Part Code
BTS1

### Double Outlet Plate



Part Code
BTS2

### Bench Outside Bend



Part Code
BTOB

### Bench Inside Bend



Part Code
BTIB

### Bench Tee



Part Code
BTT



## Bench Outlet Boxes

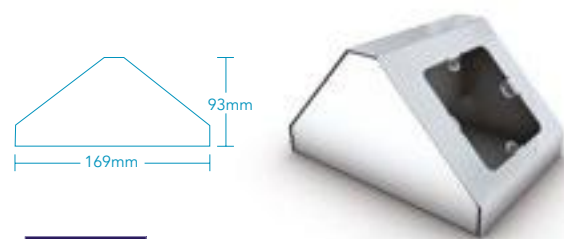
PLEASE NOTE: All outlet boxes are factory finished white (Ral 9010). Other colours are available on request.



**Part Code**

BS1

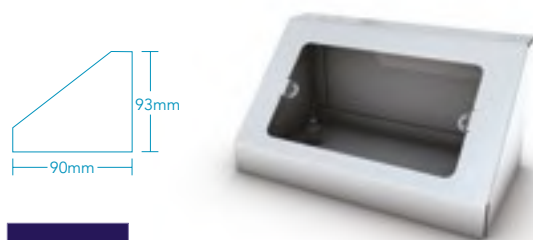
1 Gang.  
Single sided.



**Part Code**

BS2

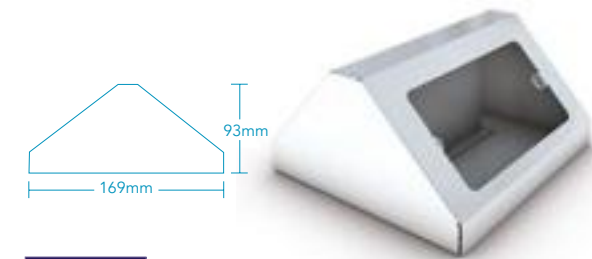
1 Gang.  
Back to back.



**Part Code**

BS3

Twin.  
Single Sided.



**Part Code**

BS4

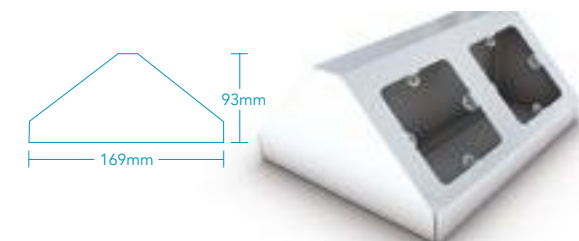
Twin.  
Back to back.



**Part Code**

BS5

2x1 Gang.  
Single sided.



**Part Code**

BS6

2x1 Gang  
Back to back.

## Data Outlet Box

Box to accept 20, 25 or 32mm conduit.  
c/w 5 No. Plates to accept: RJ45snap in connector standard sizes.

Extra height options available to accommodate CAT 6 cables.  
Width, length and height are variable and can be adjusted on request.

5 individual plates are supplied with each 300mm box.

Part Code	Length (mm)	Width (mm)	Height (mm)
DB65	300	62	65
DB80	300	62	80

