



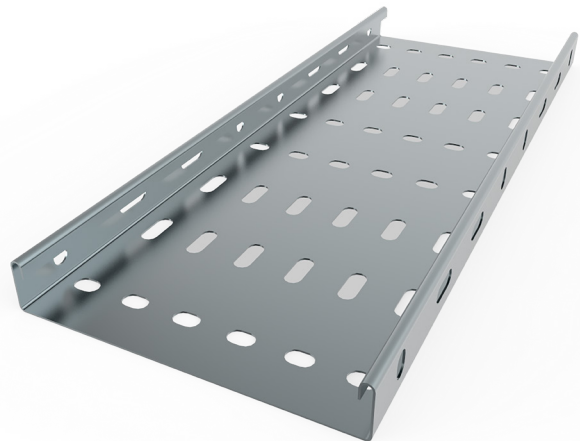
**UNITRUNK**

# SECTION 04: CABLE TRAY SYSTEMS

Unitrunk's range of Cable Tray Systems has been developed to suit the demands of an ever-changing market. State of the art technology has developed our production facility which is able to respond quickly to the demands of the market, making Unitrunk one of the most advanced companies in the industry.

Unitrunk Cable Tray Systems consist of light, medium and heavy duty pattern with standard perforations. The requirements of a cable tray finish can vary, depending upon the situation, from being purely cosmetic to being capable of providing protection in the most corrosive environments.

Unitrunk Cable Tray is produced in pre-galvanised mild steel to BS EN 10346:2015 or galvanized in accordance with BS EN ISO1461. All our trays conform to BS 61537:2007. A wide range of materials and finishes is available on request.



ACCREDITED TO THE FOLLOWING STANDARDS:



## Light Duty Cable Tray

(in accordance with BS 61537)

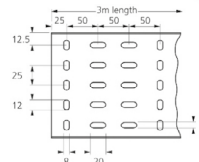
All light duty tray lengths up to and including LD225T are supplied with an inwards swage on one end, to eliminate the need for couplers. LD300T and above require the use of couplers. A range of gauges are available on request.

Part Code	Tray Width (mm)
LD50T	50
LD75T	75
LD100T	100
LD150T	150
LD225T	225
LD300T	300
LD450T	450
LD600T	600
LD750T	750
LD900T	900

Available across this size range

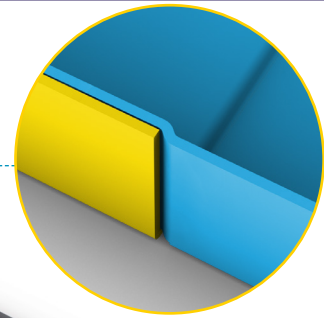
ZM  
GX  
SS  
GA

PG CP  
750-900 only

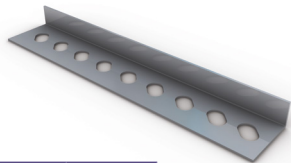


21.5mm on 300-900mm width    13.5mm on 50-225mm width

If you require 50 - 600 in PG CP please refer to the UNIKLIP Cable Tray section on page 42



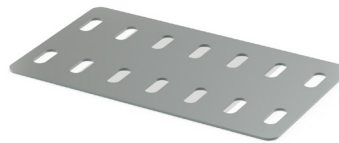
### Straight Coupler



Part Code	Length (mm)
LD/SC	161

Sold in pairs.

### Fish Plate



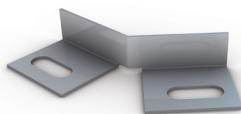
Part Code	Length (mm)
FP 225-900	Width dimension less 52

### Earth Link



Part Code	Description
CES	Plain Copper
TCES	Tinned Copper
EBS100	M6 Braid

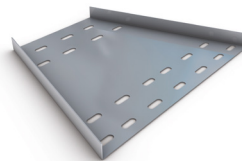
### Cranked Coupler



Part Code
LD/CC

Sold in pairs.

### Reducer



Part Code	Length (mm)
LD-SR	250

Please state sizes required.

### Nuts & Bolts



Part Code
M6X12

Order separately.

### Flat 90° Bend

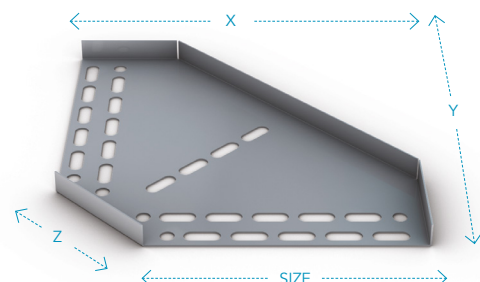
Part Code
LD 50-900FB90

Available across this size range

ZM    GX    SS    GA

PG CP  
750-900 only

Size	50	75	100	150	225	300	450	600	750	900
X	126	151	175	225	375	450	600	750	900	1058
Y	166	191	215	265	415	490	640	790	940	1098
Z	107	107	107	107	211	211	211	211	211	211



If you require 50 - 600 in PG CP please refer to the UNIKLIP Cable Tray section on page 42

# CABLE TRAY SYSTEMS

## Flat 45° Bend

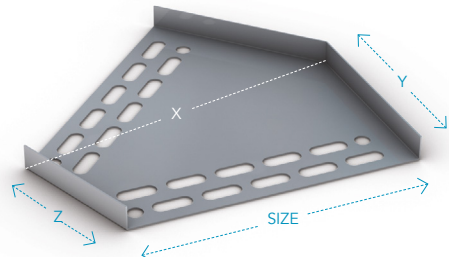
If you require 50 - 600 in   please refer to the **UNIKLIP** Cable Tray section on page 42

**Part Code**  
LD 50-900FB45

Available across this size range

Size	50	75	100	150	225	300	450	600	750	900
X	66	93	120	174	268	344	510	673	835	998
Y	52	63	73	94	155	187	249	311	373	435
Z	58	58	58	58	115	115	115	115	115	115

750-900 only



## Flat 4 Way Equal Intersection

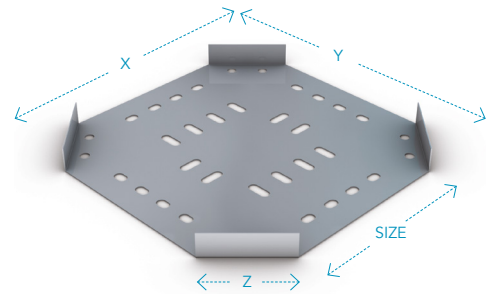
If you require 50 - 600 in   please refer to the **UNIKLIP** Cable Tray section on page 42

**Part Code**  
LD 50-900FW

Available across this size range

Size	50	75	100	150	225	300	450	600	750	900
X	177	213	249	320	532	637	850	1062	1274	1486
Y	177	213	249	320	532	637	850	1062	1274	1486
Z	107	107	107	107	211	211	211	211	211	211

750-900 only



## Flat Equal Tee

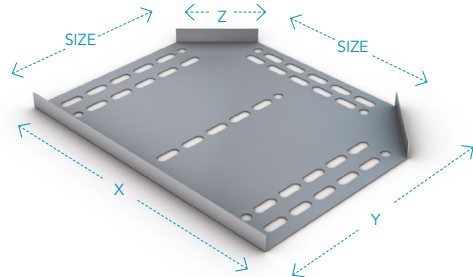
If you require 50 - 600 in   please refer to the **UNIKLIP** Cable Tray section on page 42

**Part Code**  
LD 50-900ET

Available across this size range

Size	50	75	100	150	225	300	450	600	750	900
X	204	229	254	304	530	605	755	906	1056	1206
Y	127	152	177	227	377	452	603	752	902	1053
Z	107	107	107	107	211	211	211	211	211	211

750-900 only



## Outside Riser

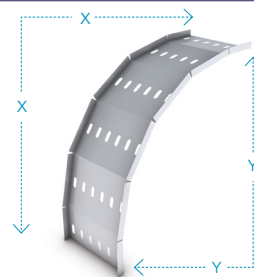
If you require 50 - 600 in   please refer to the **UNIKLIP** Cable Tray section on page 42

**Part Code**  
LD 50-450VR 600-900ER

Available across this size range

Size	50	75	100	150	225	300	450	600	750	900
X	297	297	297	297	297	297	297	297	297	297
Y	337	337	337	337	377	337	337	337	337	337

750-900 only



## Inside Riser

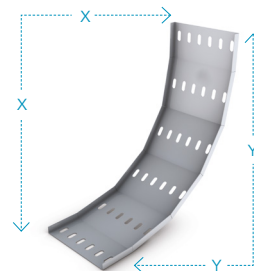
If you require 50 - 600 in   please refer to the **UNIKLIP** Cable Tray section on page 42

**Part Code**  
LD 50-450VR 600-900IR

Available across this size range

Size	50	75	100	150	225	300	450	600	750	900
X	297	297	297	297	297	297	297	297	297	297
Y	337	337	337	337	377	337	337	337	337	337

750-900 only



### Medium Duty Cable Tray

(in accordance with BS 61537)

Part Code	Tray Width (mm)
MR50T	50
MR75T	75
MR100T	100
MR150T	150
MR225T	225
MR300T	300
MR450T	450
MR600T	600
MR750T	750
MR900T	900

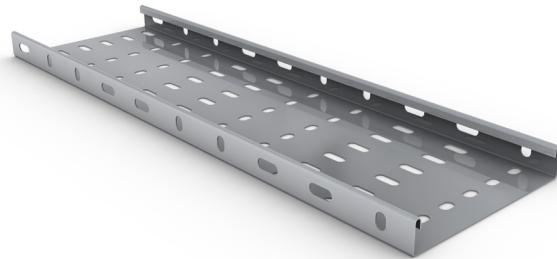




  
 Available across this size range



  
 750-900 only



If you require 50 - 600 in   please refer to the **UNIKLIP** Cable Tray section on page 42

### Straight Coupler



Part Code	Length (mm)
MR/SC	225

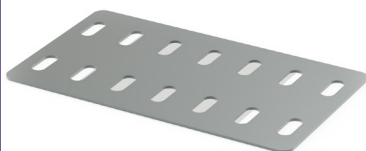
Sold in pairs.

### Tray Divider



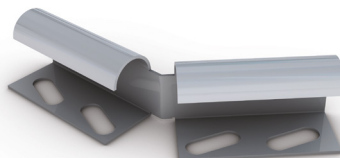
Part Code	Length (mm)
MR/DF	300

### Fish Plate



Part Code	Width (mm)
FP 100-900mm	Width dimension less 52

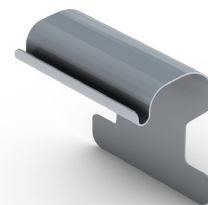
### Cranked Coupler



Part Code	Length (mm)
MR/CC	300

Sold in pairs.

### Tray to Channel Klip











Part Code	Length (mm)
CHTR 25	225

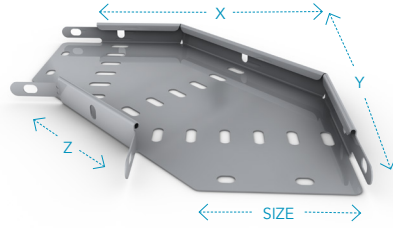
Sold in pairs

# CABLE TRAY SYSTEMS



## Flat 90° Bend







If you require 50 - 600 in   please refer to the **UNIKLIP** Cable Tray section on page 42

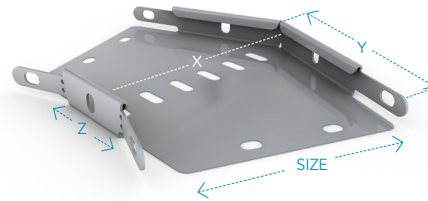
Part Code	     									
MR 50-900FB90	750-900 only									
Available across this size range										
Size	50	75	100	150	225	300	450	600	750	900
X	126	151	175	225	375	450	600	750	900	1058
Y	166	191	215	265	415	490	640	790	940	1098
Z	107	107	107	107	211	211	211	211	211	211



## Flat 45° Bend







If you require 50 - 600 in   please refer to the **UNIKLIP** Cable Tray section on page 42

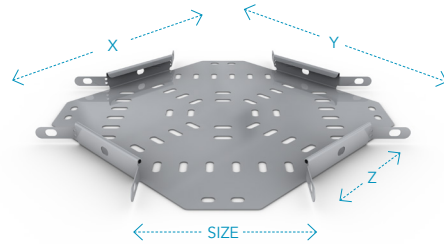
Part Code	     									
MR 50-900FB945	750-900 only									
Available across this size range										
Size	50	75	100	150	225	300	450	600	750	900
X	66	93	120	174	268	344	510	673	835	998
Y	52	63	73	94	155	187	249	311	373	435
Z	58	58	58	58	115	115	115	115	115	115





## Flat 4 Way Equal Intersection







If you require 50 - 600 in   please refer to the **UNIKLIP** Cable Tray section on page 42

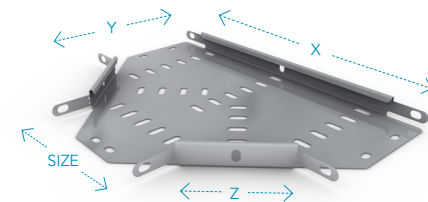
Part Code	     									
MR 50-900FW	750-900 only									
Available across this size range										
Size	50	75	100	150	225	300	450	600	750	900
X	177	213	249	320	532	637	850	1062	1274	1486
Y	177	213	249	320	532	637	850	1062	1274	1486
Z	107	107	107	107	211	211	211	211	211	211



## Flat Equal Tee

If you require 50 - 600 in   please refer to the **UNIKLIP** Cable Tray section on page 42

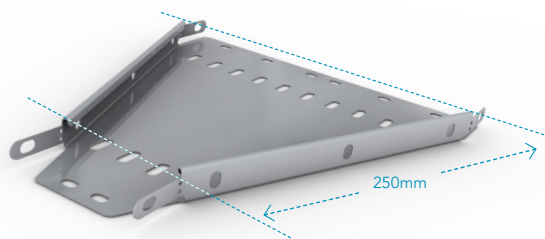
Part Code	     									
MR 50-900ET	750-900 only									
Available across this size range										
Size	50	75	100	150	225	300	450	600	750	900
X	204	229	254	304	530	605	755	906	1056	1206
Y	127	152	177	227	377	452	603	752	902	1053
Z	107	107	107	107	211	211	211	211	211	211



## Reducer







Part Code	Length (mm)
MR-SR	250

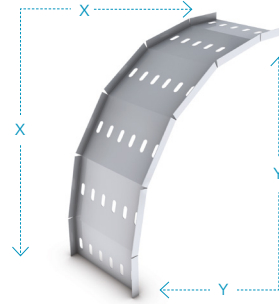
Please state sizes required.





Outside Riser







If you require 50 - 600 in   please refer to the **UNIKLIP** Cable Tray section on page 42

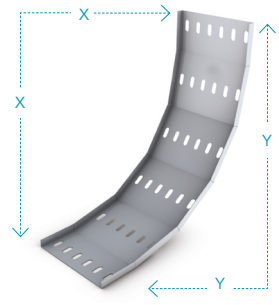
Part Code											
MR 50-450VR											
MR 600-900ER											
Available across this size range											
Size	50	75	100	150	225	300	450	600	750	900	
X	297	297	297	297	297	297	297	297	297	297	
Y	337	337	337	337	377	337	337	337	337	337	



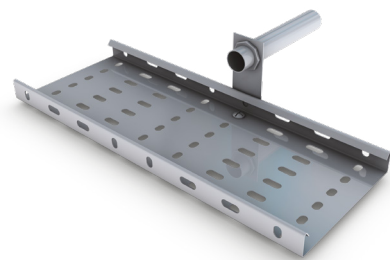
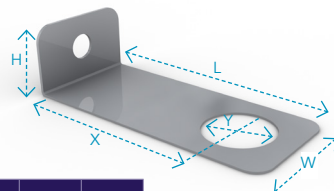
Inside Riser

If you require 50 - 600 in   please refer to the **UNIKLIP** Cable Tray section on page 42

Part Code											
MR 50-450VR											
MR 600-900IR											
Available across this size range											
Size	50	75	100	150	225	300	450	600	750	900	
X	297	297	297	297	297	297	297	297	297	297	
Y	337	337	337	337	377	337	337	337	337	337	



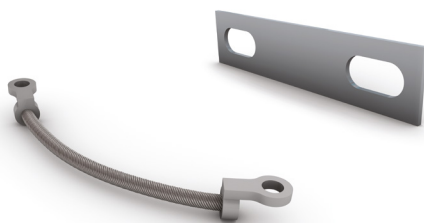
Conduit Take-off Plate



Part Code	H	L	W	X	Y
TRCB20	20	90	40	70	20
TRCB25	20	90	40	70	25

Suitable For Light/Medium/Heavy Tray.

Earth Link



Part Code	Description
CES	Plain Copper
TCES	Tinned Copper
EBS100	M6 Braid

Nuts & Bolts



Part Code  
M6X12  
Order separately.

# CABLE TRAY SYSTEMS

## Heavy Duty Cable Tray

(in accordance with BS 61537)

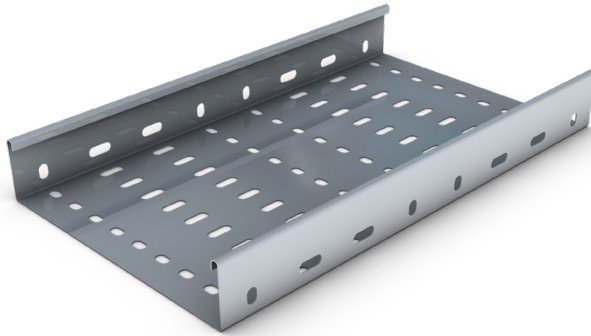
Part Code	Tray Width (mm)
HR50T	50
HR75T	75
HR100T	100
HR150T	150
HR225T	225
HR300T	300
HR450T	450
HR600T	600
HR750T	750
HR900T	900



Available across this size range

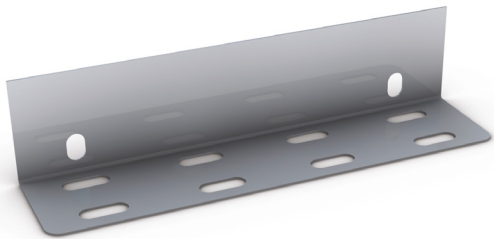


750-900 only



If you require 50 - 600 in please refer to the **UNIKLIP** Cable Tray section on page 42

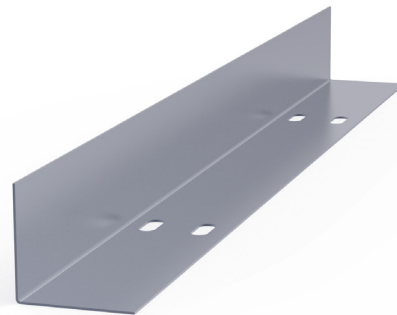
### Straight Coupler



Part Code	Length (mm)
HR/SC	225

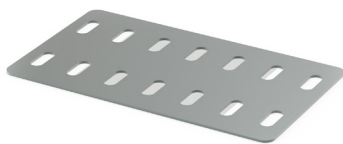
Sold in pairs.

### Tray Divider



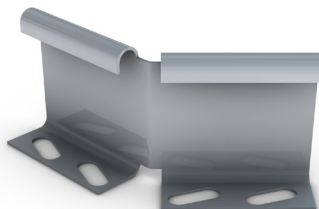
Part Code	Length (mm)
HR/DF	3000

### Fish Plate



Part Code	Width (mm)
FP 100-900mm	Width dimension less 52

### Cranked Coupler



Part Code	
HR/CC	Sold in pairs.

### Tray to Channel Klip



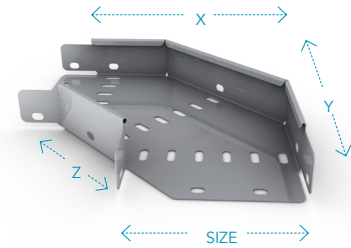
Part Code	
CHTR 50	Sold individually.



### Flat 90° Bend

If you require 50 - 600 in please refer to the **UNIKLIP** Cable Tray section on page 42

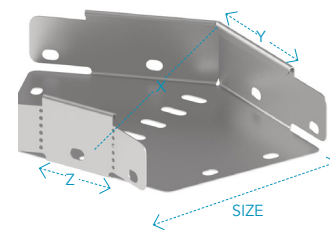
Part Code										
HR 50-900FB90	750-900 only									
Available across this size range										
Size	50	75	100	150	225	300	450	600	750	900
X	126	151	175	225	375	450	600	750	900	1058
Y	166	191	215	265	415	490	640	790	940	1098
Z	107	107	107	107	211	211	211	211	211	211



### Flat 45° Bend

If you require 50 - 600 in please refer to the **UNIKLIP** Cable Tray section on page 42

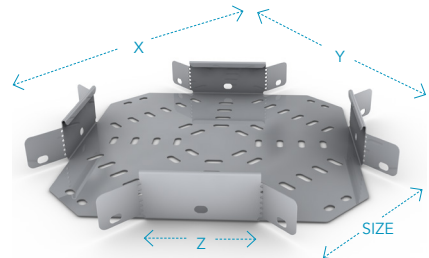
Part Code										
HR 50-900FB45	750-900 only									
Available across this size range										
Size	50	75	100	150	225	300	450	600	750	900
X	66	93	120	174	268	344	510	673	835	998
Y	52	63	73	94	155	187	249	311	373	435
Z	58	58	58	58	115	115	115	115	115	115



### Flat 4 Way Equal Intersection

If you require 50 - 600 in please refer to the **UNIKLIP** Cable Tray section on page 42

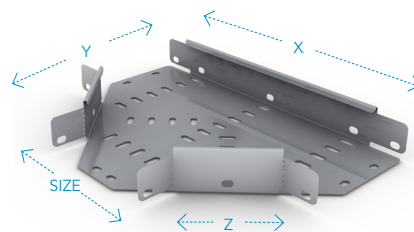
Part Code										
HR 50-900FW	750-900 only									
Available across this size range										
Size	50	75	100	150	225	300	450	600	750	900
X	177	213	249	320	532	637	850	1062	1274	1486
Y	177	213	249	320	532	637	850	1062	1274	1486
Z	107	107	107	107	211	211	211	211	211	211



### Flat Equal Tee

If you require 50 - 600 in please refer to the **UNIKLIP** Cable Tray section on page 42

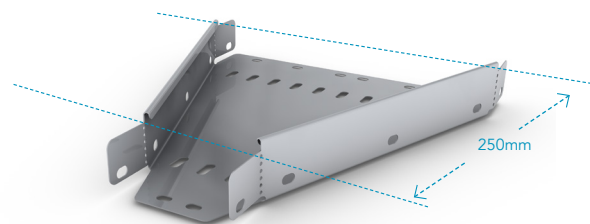
Part Code										
HR 50-900ET	750-900 only									
Available across this size range										
Size	50	75	100	150	225	300	450	600	750	900
X	204	229	254	304	530	605	755	906	1056	1206
Y	127	152	177	227	377	452	603	752	902	1053
Z	107	107	107	107	211	211	211	211	211	211



### Reducer

Part Code	Length (mm)
HR-SR	250

Please state sizes required.



QuickFix Trunking

QuickFix Multi Compartment Trunking

Lighting Trunking

Uniklip Cable Tray

Speedway Cable Ladder Pre-Galv. Cable Ladder

Cable Basket Systems

Channel & Support

Floor Trunking

Bench Outlet & Perimeter Trunking

Steel Conduit (Class 4)

Innovative Design Solutions

Accessories & Supports

Index

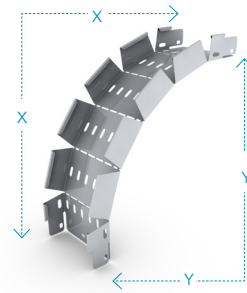


# CABLE TRAY SYSTEMS

## Outside Riser

If you require 50 - 600 in   please refer to the **UNIKLIP** Cable Tray section on page 42

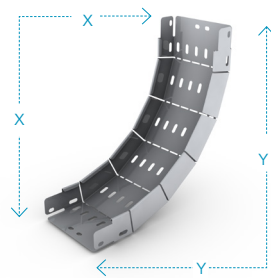
Part Code											
HR 50-450VR											
HR 600-900ER											
		Available across this size range									
Size	50	75	100	150	225	300	450	600	750	900	
X	297	297	297	297	297	297	297	297	297	297	
Y	337	337	337	337	377	337	337	337	337	337	



## Inside Riser

If you require 50 - 600 in   please refer to the **UNIKLIP** Cable Tray section on page 42

Part Code											
HR 50-450VR											
HR 600-900IR											
		Available across this size range									
Size	50	75	100	150	225	300	450	600	750	900	
X	297	297	297	297	297	297	297	297	297	297	
Y	337	337	337	337	377	337	337	337	337	337	



**DON'T FORGET**  
THE NUTS & BOLTS OF IT...

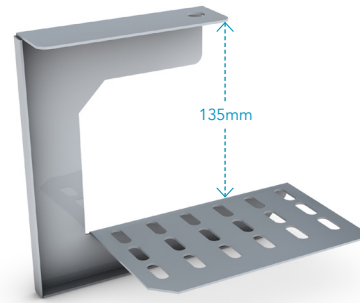
**REMEMBER**

CHECK SECTION 12

For all your Accessories & Supports needs (see page 138)



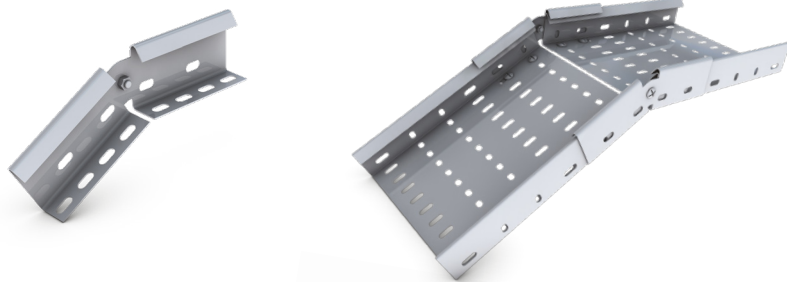
Tray Overhead Hangers



Part Code	Width (mm)
OH50-OH300	50 - 300

Suitable for Light/Medium/Heavy Duty Cable Tray.

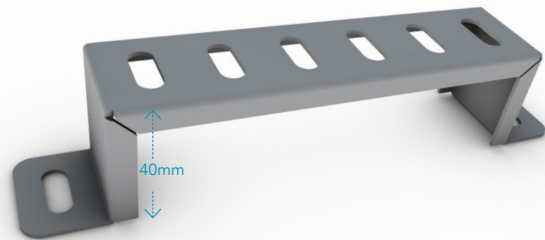
Vertical Adjustable Coupler



Part Code
HR-VAC / MR-VAC

Sold in pairs to suit MR and HR Tray.

Stand-off Bracket

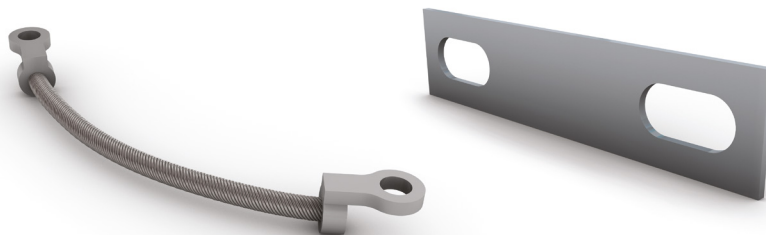


Part Code
SOB50-SOB600

Size	50	75	100	150	225	300	450	600

**Available finishes include:**  
 Pre-galvanised to BS EN 10346:2015 (standard references throughout brochure).  
 Post galvanised to BS EN ISO 1461:2009 (prefix reference with GA).  
 Powder coated (prefix reference with CP).  
 Stainless Steel 316 grade (prefix reference with SS).

Earth Link



Part Code	Description
CES	Plain Copper
TCES	Tinned Copper
EBS100	M6 Braid

QuickFix Trunking

QuickFix Multi Compartment Trunking

Lighting Trunking

Uniklip Cable Tray

Speedway Cable Ladder Pre-Galv. Cable Ladder

Cable Basket Systems

Channel & Support

Floor Trunking

Bench Outlet & Perimeter Trunking

Steel Conduit (Class 4)

Innovative Design Solutions

Accessories & Supports

Index

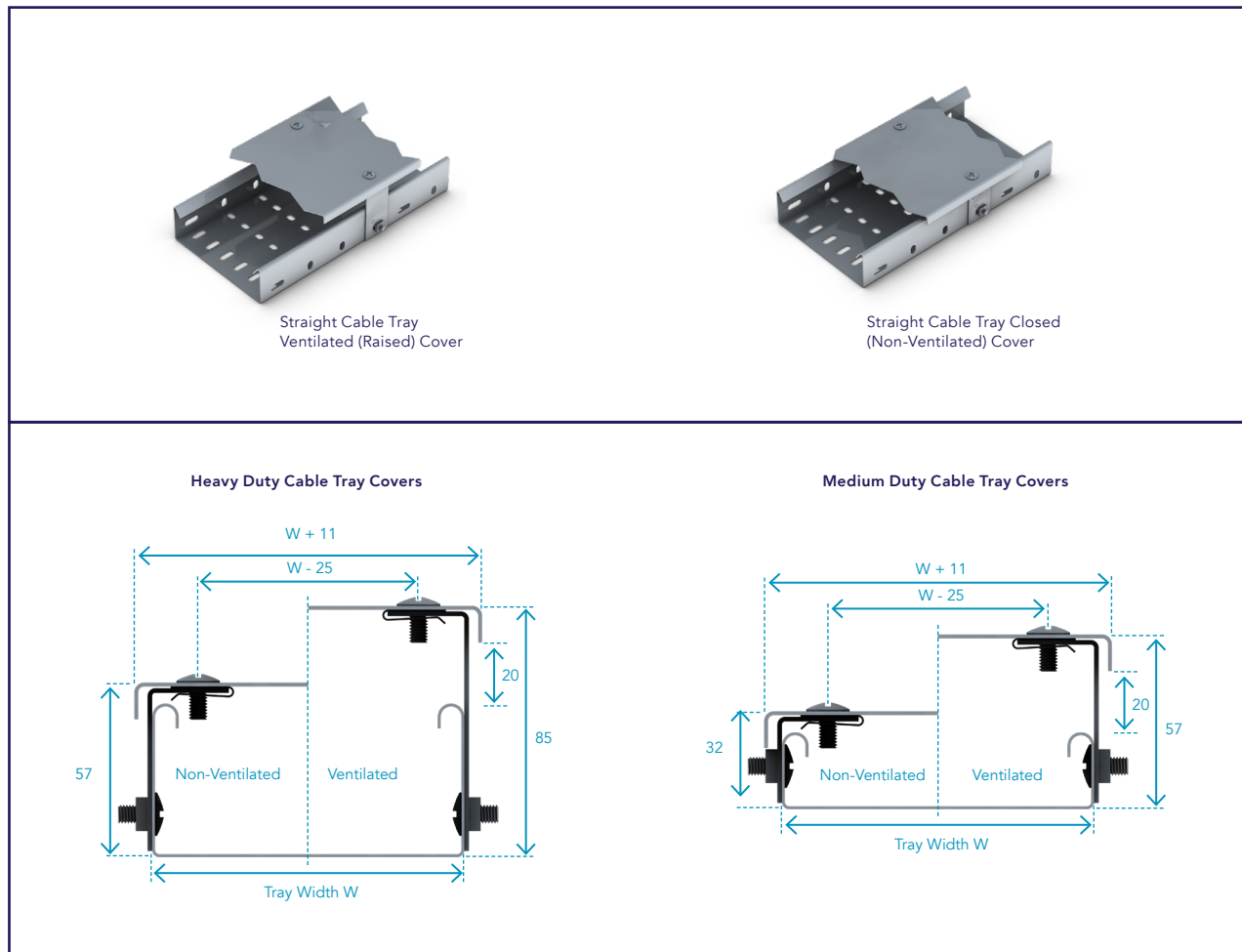
# CABLE TRAY SYSTEMS

## Covers & Brackets

The Unitrunk cable tray range is complimented by an extensive range of covers. Covers are available to suit the Unitrunk medium duty and Unitrunk heavy duty cable tray systems. Covers are used with cable tray to provide mechanical and environmental protection for cables and other items installed on the cable tray. Covers can be installed as either closed (non-ventilated, close-fitting) or ventilated (plain raised cover) depending on the type of cover fixing kit supplied with each cover.

Covers for straight cable tray are available in non-standard gauges to suit particular site installation requirements, consult our Sales Team for details.

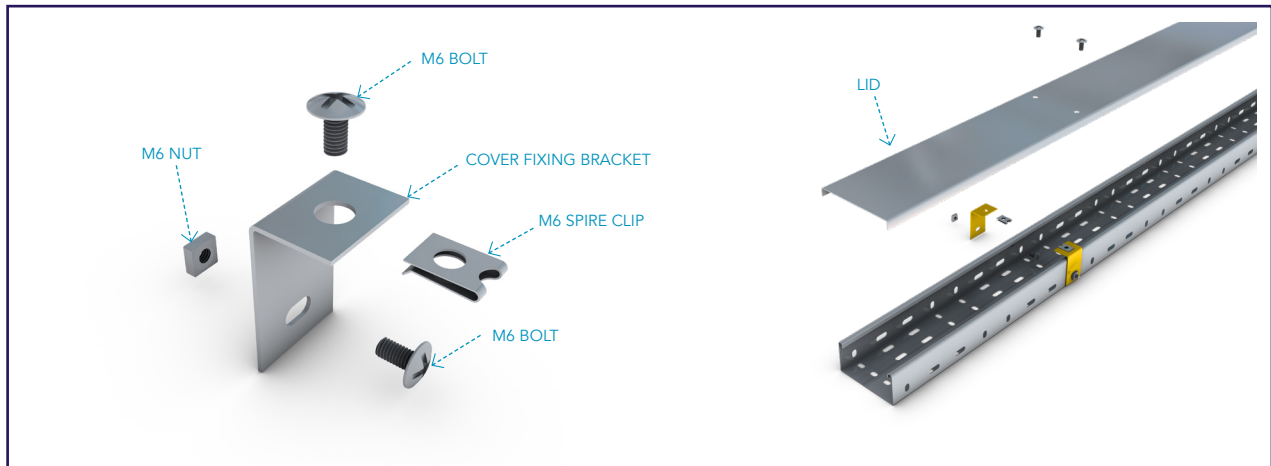
Ventilated covers for Unitrunk medium duty return flange cable tray have a ventilation gap of 21mm. Ventilated covers for Unitrunk heavy duty return flange cable tray have a ventilation gap of 24mm.



## Covers Fixing Kits

Unitrunk cable tray covers are supplied as complete kits with all necessary fixings. Each fixing kit comprises of a component lid, cover fixing bracket, a corrosion resistant M6 spire clip, two M6 screws and one M6 nut.

The general method of assembly for the Unitrunk cable tray cover is shown below. This method is common to both medium and heavy duty cable trays, and to cable tray fittings.



## Cable Tray Cover Ordering Code Guide

### STEP 1: Product Finish



### STEP 2: Ventilation

Code	Cover Type
UC	Unventilated Cover
VC	Ventilated Cover

### STEP 3: Tray Side Wall

Code	Sidewall Height
MR	Medium Duty
HR	Heavy Duty

### STEP 4: Tray Width

Part Code	Tray Width (mm)
50	50
75	75
100	100
150	150
225	225
300	300
450	450
600	600
750	750
900	900

### STEP 5: Product Type

Part Code	Product Type
T	Cable Tray
FB90	Flat Bend 90°
FB45	Flat Bend 45°
ET	Equal Tee
FW	Fourway Intersection
ER90	External Riser 90°
IR90	Internal Riser 90°
ER45	External Riser 45°
IR45	Internal Riser 45°
SR	Reducer

### Example Ordering

- Stainless Steel, Unventilated cover
- Heavy Duty
- 100mm Wide
- Equal Tee

**SSUCHR100ET**

If you require specialist or bespoke products, or can't find the product specification you need, please contact one of our regional offices for assistance.

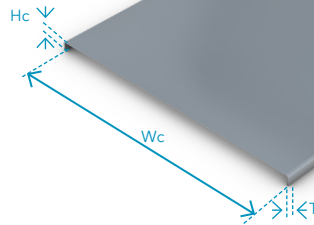
# CABLE TRAY SYSTEMS

## Straight Tray Covers

Unitrunk straight tray covers are 3m in length and are available in widths of 50mm to 900mm as standard. Covers are common for both closed and ventilated applications.

### Straight Tray Covers - Dimensions & Weights

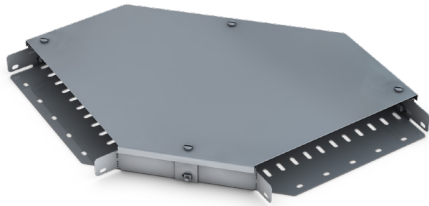
Ref.	Tray Width (mm)	Width - Wc (mm)	Height - Hc (mm)	Weight (kg)
CR50T	50	61	11.9	2.51
CR75T	75	86	11.9	3.17
CR100T	100	111	11.9	3.92
CR150T	150	161	11.9	5.43
CR225T	225	236	11.9	7.70
CR300T	300	311	12.2	9.96
CR450T	450	461	12.5	18.13
CR600T	600	611	12.5	23.78
CR750T	750	761	12.5	29.47
CR900T	900	911	12.5	35.12



Weights shown are for standard pre-galvanised finish .

## Cable Tray Fitting Covers

Unitrunk cable tray fitting covers are available in widths of 50mm to 900mm as standard. Covers are common for both closed and ventilated applications.



## Cover Fixing Kits

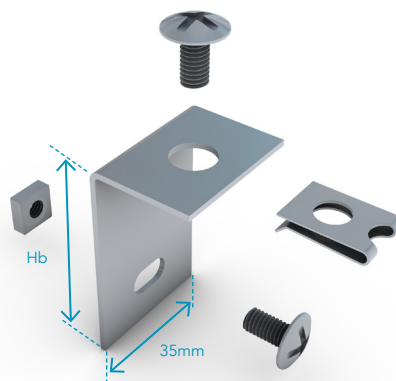
Covers for straight cable tray and cable tray fittings are supplied with the appropriate number of cover fixing kits as follows.

Each cover fixing kit is supplied with the appropriate cover fixing bracket for either a non-ventilated cover or ventilated cover based on the part number ordered. (For dimensions of the cover mounting brackets please see table).

### Cover Fixing Kit Requirements

Tray & Fitting Type	Width (mm)		
	50-150	225-450	600-900
Straight Tray	6	6	6
90° Flat Elbows	3	4	6
60° Flat Elbows	3	4	6
45° Flat Elbows	3	3	3
30° Flat Elbows	3	3	3
Inside Risers	4	4	4
Outside Risers	4	4	4
Equal Tees	3	4	5
Unequal Tees*	3	4	5
Equal Crosses	4	4	4
Reducers	4	4	4

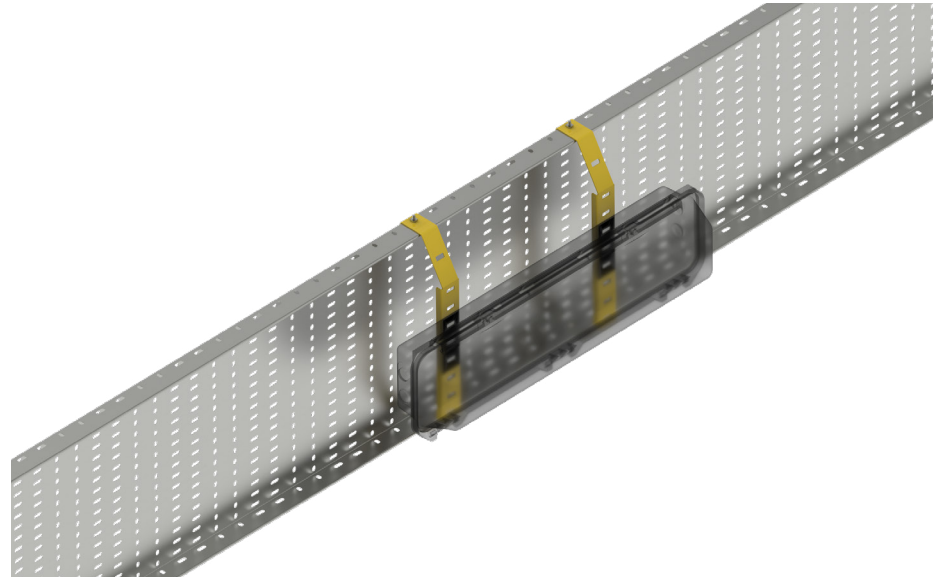
\*Based on largest branch size



Part Code	Cover Type	Bracket Height Hb (mm)
BKT28-KIT	MR unventilated cover	28
BKT53-KIT	MR ventilated cover	53
BKT53-KIT	HR unventilated cover	53
BKT78-KIT	HR ventilated cover	78

# CABLE TRAY LIGHTING ACCESSORIES

The brackets shown below are compatible with UNIKLIP® Cable Tray Systems.



## Fixed Angle Bracket 30° & 60°

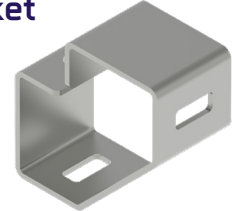


**Part Code**

AC-LB1

Used for mounting lighting units at angles of either 30° or 60°. Fixed to both the sidewall and the base of the cable tray. Supplied singly.

## Fixed Angle Bracket 0° & 45°

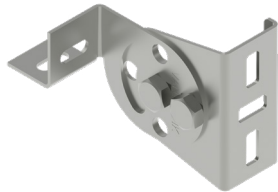


**Part Code**

AC-LB2

Used for mounting lighting units at angles of either 45° or 90°. Fixed to both the sidewall and the base of the cable tray. Supplied singly.

## Adjustable Angle Bracket

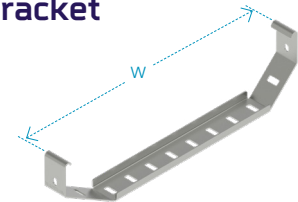


**Part Code**

AC-LB3

Used for mounting lighting units at adjustable angles. Fixed to both the sidewall and the base of the cable tray. Supplied singly.

## Under Slung Bracket

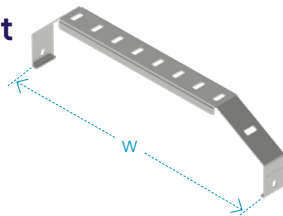


**Part Code**

HR-LB4-Width

Used for mounting lighting units directly underneath the cable tray with a drop of 58 mm or at an angle of either 45° or 60°. Supplied singly.

## Over Top Bracket

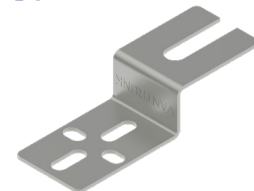


**Part Code**

HR-LB5-Width

Used for mounting lighting units directly above cable tray at a height of 58mm or at an angle of either 45° or 60°, for use the cable tray is mounted against a surface on a handrail. Supplied singly.

## Hold-Off Bracket



**Part Code**

AC-LB6

Used for mounting lighting units to both the sidewall and the base of the cable tray. Supplied singly.

QuickFix  
Trunking

QuickFix Multi  
Compartment  
Trunking

Lighting  
Trunking

Uniklip  
Cable Tray

Speedway  
Cable Ladder  
Pre-Galv.  
Cable Ladder

Cable Basket  
Systems

Channel &  
Support

Floor  
Trunking

Bench Outlet  
& Perimeter  
Trunking

Steel Conduit  
(Class 4)

Innovative  
Design  
Solutions

Accessories  
& Supports

Index